

## OBSTETRICS

# Detection of triploid, molar, and vanishing-twin pregnancies by a single-nucleotide polymorphism-based noninvasive prenatal test

Kirsten J. Curnow, PhD; Louise Wilkins-Haug, PhD, MD; Allison Ryan, PhD; Eser Kirkızlar, PhD; Melissa Stosic, MS; Megan P. Hall, PhD; Styrmir Sigurjonsson, PhD; Zachary Demko, PhD; Matthew Rabinowitz, PhD; Susan J. Gross, MD

**OBJECTIVE:** We sought to determine the ability of single-nucleotide polymorphism–based noninvasive prenatal testing (NIPT) to identify triploid, unrecognized twin, and vanishing twin pregnancies.

**STUDY DESIGN:** The study included 30,795 consecutive reported clinical cases received for NIPT for fetal whole-chromosome aneuploidies; known multiple gestations were excluded. Cell-free DNA was isolated from maternal blood samples, amplified via 19,488-plex polymerase chain reaction, and sequenced. Sequencing results were analyzed to determine fetal chromosome copy number and to identify the presence of additional fetal haplotypes.

**RESULTS:** Additional fetal haplotypes, indicative of fetal triploidy, vanishing twin, or undetected twin pregnancy, were identified in 130 (0.42%) cases. Clinical confirmation (karyotype for singleton pregnancies, ultrasound for multifetal pregnancies) was available for 58.5% (76/130) of cases. Of the 76 cases with confirmation, 42.1%

were vanishing twin, 48.7% were viable twin, 5.3% were diandric triploids, and 3.9% were nontriploid pregnancies that lacked evidence of co-twin demise. One pregnancy had other indications suggesting triploidy but lacked karyotype confirmation. Of the 5 vanishing twin cases with a known date of demise, 100% of losses occurred in the first trimester; up to 8 weeks elapsed between loss and detection by NIPT.

**CONCLUSION:** This single-nucleotide polymorphism–based NIPT successfully identified vanished twin, previously unrecognized twin, and triploid pregnancies. As vanishing twins are more likely to be aneuploid, and undetected residual cell-free DNA could bias NIPT results, the ability of this method to identify additional fetal haplotypes is expected to result in fewer false-positive calls and prevent incorrect fetal sex calls.

**Key words:** noninvasive prenatal testing, single-nucleotide polymorphism, triploidy, vanishing twin

Cite this article as: Curnow KJ, Wilkins-Haug L, Ryan A, et al. Detection of triploid, molar, and vanishing-twin pregnancies by a single-nucleotide polymorphism-based noninvasive prenatal test. *Am J Obstet Gynecol* 2014;211:x:ex-x.ex.

The recent introduction of cell-free DNA (cfDNA)-based noninvasive prenatal testing (NIPT) has offered pregnant women a more accurate method for detecting fetal aneuploidies than traditional serum screening

methods.<sup>1-12</sup> NIPT noninvasively determines fetal chromosome copy number by interrogating cfDNA isolated from maternal plasma, with the fetus contributing anywhere from <2% to >30% of the total cfDNA.<sup>3,7,13</sup> Other NIPT approaches use quantitative “counting” methods where fetal chromosome copy number is determined by comparing the absolute number of sequence reads from the chromosome(s) of interest (eg, chromosome 21) to reference chromosome(s), inferring fetal trisomy when this is above a predetermined threshold. This approach cannot determine the source of DNA (fetal or maternal) and is therefore unable to detect additional fetal haplotypes associated with triploidy or vanishing twins. Vanishing twins were reported to

From Natera Inc, San Carlos, CA (Drs Curnow, Ryan, Kirkızlar, Hall, Sigurjonsson, Demko, Rabinowitz, and Gross and Ms Stosic) and Division of Maternal-Fetal Medicine, Department of Obstetrics and Gynecology, Brigham and Women’s Hospital, and Harvard Medical School, Boston, MA (Dr Wilkins-Haug).

Received June 9, 2014; revised Aug. 11, 2014; accepted Oct. 7, 2014.

This study was supported by Natera.

K.J.C., A.R., E.K., M.S., M.P.H., S.S., Z.D., M.R., and S.J.G. are employees of Natera Inc and hold stock or options to hold stock in the company. L.W-H. participated in multicenter clinical trials sponsored by Ariosa and Sequenom and received partial grant support, but did not personally receive any funding.

Presented at the International Conference on Prenatal Diagnosis and Therapy, Brisbane, Australia, July 20-23, 2014, and at the European Human Genetics Conference 2014 of the European Society of Human Genetics, Milan, Italy, May 31–June 3, 2014.

Corresponding author: Susan J. Gross, MD. [sgross@natera.com](mailto:sgross@natera.com)

0002-9378/\$36.00 © 2014 Elsevier Inc. All rights reserved. • <http://dx.doi.org/10.1016/j.ajog.2014.10.012>

account for 15% of false positives in a recent counting-based NIPT study.<sup>14</sup> This likely results in unnecessary invasive prenatal testing. A more recent approach using a single-nucleotide polymorphism (SNP)-based method along with sophisticated informatics can resolve this potential source of false-positive results. This approach identifies the presence of additional fetal haplotypes, indicative of a triploid or dizygotic multifetal pregnancy, and determines parental origin.<sup>10,12</sup>

Using the SNP-based approach, the prevalence of cases found to have additional fetal haplotypes within 30,795 consecutive cases undergoing routine clinical NIPT was determined, and is reported here. Clinical follow-up of these cases is also described.

## MATERIALS AND METHODS

### Patients

The current study included all samples from participating centers received for commercial testing from March 1, through Nov. 30, 2013, that received an NIPT result. This study received a notification of exempt determination from an institutional review board (Ethical and Independent Review Services, no. 14064-01). All samples were analyzed at Natera's CLIA- and CAP-certified laboratory in San Carlos, CA. Analysis was performed for all samples on chromosomes 13, 18, 21, X, and Y, and included detection of trisomy 21, trisomy 18, trisomy 13, monosomy X, sex chromosome abnormalities (47,XXX/XXY/YYY), fetal sex, and additional fetal haplotypes.

### Sample collection and NIPT

Maternal blood samples (>13 mL) were collected in Streck (Omaha, NE) BCTs and processed at Natera (San Carlos, CA) within 6 days of collection. All samples were accompanied by a requisition form from the ordering clinician, and included the following patient information: gestational age, maternal date of birth, maternal weight, whether it was a multigestation pregnancy, and whether a paternal buccal swab was included. Ordering clinicians determined indication(s) for testing. Cases accepted

for analysis were indicated as singleton pregnancies by ordering clinicians. Results were reported directly to the ordering clinician or distribution partners.

Samples were considered outside of the specifications for testing and were not analyzed if there was insufficient blood volume or the wrong tube was used, the sample was damaged, the sample was received at the laboratory >6 days after collection, the gestational age was <9 weeks, the patient used an egg donor, or the patient had a confirmed multiple gestation.<sup>15</sup> Testing was performed on all samples with sufficient blood volume (>13 mL) as described previously using validated laboratory methodologies (cfDNA isolation, polymerase chain reaction amplification targeting 19,488 SNPs, high-throughput sequencing, and analysis using the Next-generation Aneuploidy Test Using SNPs [NATUS] algorithm).<sup>9-12,15</sup> Samples were subject to a stringent set of quality-control metrics<sup>9-13,15</sup> before reports were sent to ordering clinicians.

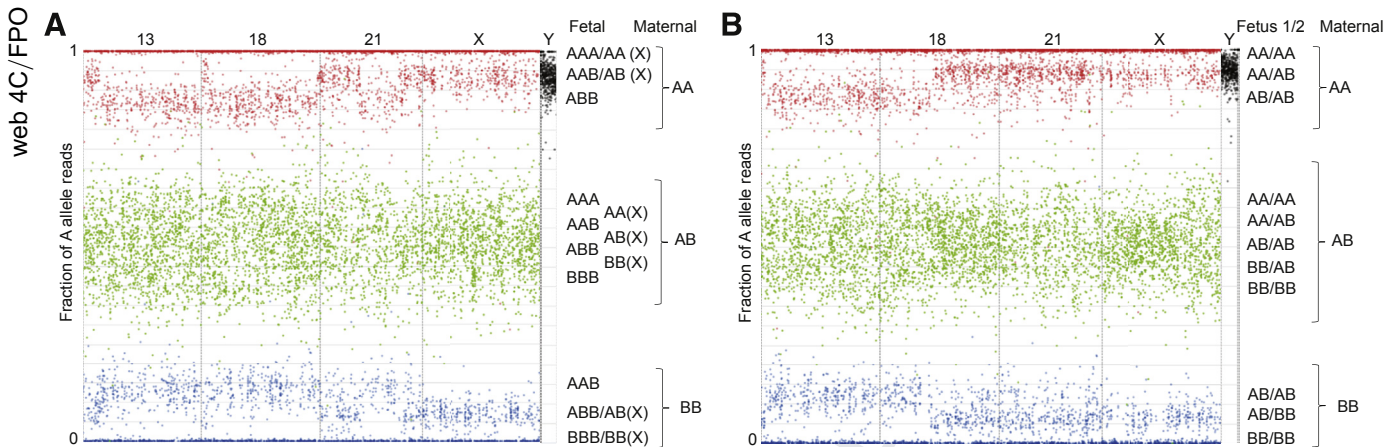
The NATUS algorithm incorporates parental genotypic information, uses numerous quality control metrics, and determines a sample-specific accuracy for each interrogated chromosome.<sup>9-12,15</sup> Briefly, the algorithm considers parental genotypic information, crossover frequency data, and possible fetal chromosome copy numbers (monosomy/disomy/trisomy) at 19,488 evaluated polymorphic loci. By comparing the observed fetal allele distributions from the sequencing data to the predicted distributions, the algorithm determines the fetal ploidy state with the maximum likelihood for each interrogated chromosome; this maximum likelihood probability is incorporated into a risk score for reporting purposes.<sup>15</sup> The NATUS algorithm is currently only validated for singleton gestations. However, the algorithm is able to determine when cfDNA sequencing results do not match the modeled fetal copy numbers with a high likelihood, and can identify the presence of additional fetal haplotypes that indicate either fetal triploidy or the presence of an undetected dizygotic multiple

gestation. The presence of an additional fetal haplotype was identified when all tested chromosomes failed to match the disomy hypothesis, and when the additional haplotype was apparent from allele distributions. At this time, the algorithm cannot distinguish dizygotic twin gestations from triploidy pregnancies due to similar allele distributions (Figure 1); therefore these are reported as 1 call. Specifically, in a euploid singleton pregnancy, where the maternal alleles are AA (with dimorphic alleles arbitrarily labeled as A and B), the 2 expected fetal genotypes include AA and AB. By contrast, in dizygotic twin and triploid pregnancies where the maternal alleles are AA, there are 3 expected fetal genotypes for both triploid (AAA, AAB, ABB) (Figure 1, A) and dizygotic twin (AA/AA, AA/AB, AB/AB) (Figure 1, B) pregnancies. This results in equivalent B allele distributions (0, 1, or 2 B alleles), and very similar A allele distributions in triploid (1, 2, or 3) and dizygotic twin (2, 3, or 4) pregnancies.

For cases with an identified additional fetal haplotype, a report was sent to the ordering clinician or laboratory indicating that the results were consistent with a possible triploid or vanishing twin pregnancy, and recommending follow-up counseling and testing; after report delivery, a Natera genetic counselor contacted the ordering clinician/provider to answer questions related to the NIPT findings.

### Clinical outcomes

Follow-up information on cases identified with an additional fetal haplotype was requested by telephone at regular intervals from ordering clinicians and partner laboratories. All information detailing ultrasound findings and pregnancy outcomes were recorded in the laboratory follow-up database. Follow-up information directly reported to Natera by providers was also recorded. Multifetal pregnancies were confirmed by ultrasound, which is consistent with how they are clinically diagnosed in practice. Cases were categorized as follows: (1) "confirmed vanishing twin pregnancy" if ultrasound detected a second empty sac or

FIGURE 1  
TITLE

Graphical representation of sequencing data obtained from **A**, 1 paternal triploidy sample and **B**, 1 vanishing twin sample. It is important to note that this is not how algorithm makes copy number calls, but is 1 method for visualizing data. All interrogated single-nucleotide polymorphisms (SNPs) are assumed to be dimorphic and are designated as A and B for simplicity. Briefly, for each graph, number of A allele reads as fraction of total reads is plotted (y-axis) against position of each of several thousand interrogated SNPs on chromosomes of interest (x-axis). X-axis represents linear position of each SNP along chromosome, and each spot corresponds to single SNP. As plasma cell-free DNA (cfDNA) is mixture of fetal and maternal cfDNA, vertical position of each spot represents sum of contribution of both fetal and maternal allele reads, and is function of fetal fraction. To more readily visualize maternal and fetal contributions, spots are colored according to maternal genotype: SNPs for which mother is homozygous for A allele (AA) are red, SNPs for which mother is homozygous for B allele (BB) are blue, and SNPs for which mother is heterozygous (AB) are green. Since majority of plasma cfDNA is maternal in origin, spots mainly distribute according to maternal genotype. Contribution of fetal allele reads results in segregation into distinct clusters. Because loci targeted on Y chromosome are homologous to loci on X chromosome, but differ by 1 nucleotide, probes hybridize to both chromosomes. However, targeted alleles have chromosomally distinct, nondimorphic identities, so are not color-coded; all alleles from X chromosome are assigned as A alleles, and all alleles from Y chromosome are assigned as B alleles. **A**, Confirmed paternal triploidy, 22.6% fetal cfDNA fraction. Position of peripheral red and blue clusters indicates additional haplotypes, as indicated to right of plot. Alleles for X chromosome are indicated (X). Presence of B alleles from Y chromosome shifts cluster downward, indicating presence of single Y chromosome (based on distribution of reads). Together, this suggests fetal chromosomal complement of 69,XXY. **B**, Confirmed vanishing twin, 19.6% fetal cfDNA fraction. Position of peripheral red and blue clusters indicates additional haplotypes, as indicated to right of plot. Presence of B alleles from Y chromosome shifts cluster downward, indicating presence of single Y chromosome (based on distribution of reads). Together, this suggests presence of vanishing twins, as indicated to right of plot; "Fetus 1/2" indicates genotypes of fetus 1/fetus 2. Center green clusters only segregate and are readily visible at higher fetal fractions.

Curnow. SNP-based NIPT detects vanishing twin pregnancies. *Am J Obstet Gynecol* 2014.

second sac containing a deceased fetus; (2) "confirmed ongoing twin pregnancy" if ultrasound showed an ongoing and viable twin pregnancy; (3) "confirmed fetal triploidy" if triploidy was confirmed by invasive testing or testing of products of conception (POC); (4) "unconfirmed fetal triploidy" included cases without invasive diagnostic testing but with ultrasound findings consistent with triploidy; (5) "confirmed nontriploid pregnancy" included cases where invasive diagnostic testing ruled out fetal triploidy and there was no evidence of co-twin demise; (6) "pregnancy loss" for cases where patients experienced spontaneous abortion and did not obtain

karyotype confirmation; or (7) "no follow-up" where follow-up information was requested but was not received by the time of manuscript submission.

### Statistical analysis

Differences in the maternal age and gestational age between confirmed twin and confirmed vanishing twin cohorts were determined using a Mann-Whitney rank sum test. A *t* test was used to compare the fetal fraction in confirmed twin and vanishing twin cases. SigmaPlot 12.5 (Systat Software, San Jose, CA) was used for all statistical analyses. A *P* value of  $< .05$  was considered statistically significant.

Unless otherwise indicated, data are presented as the mean  $\pm$  SD.

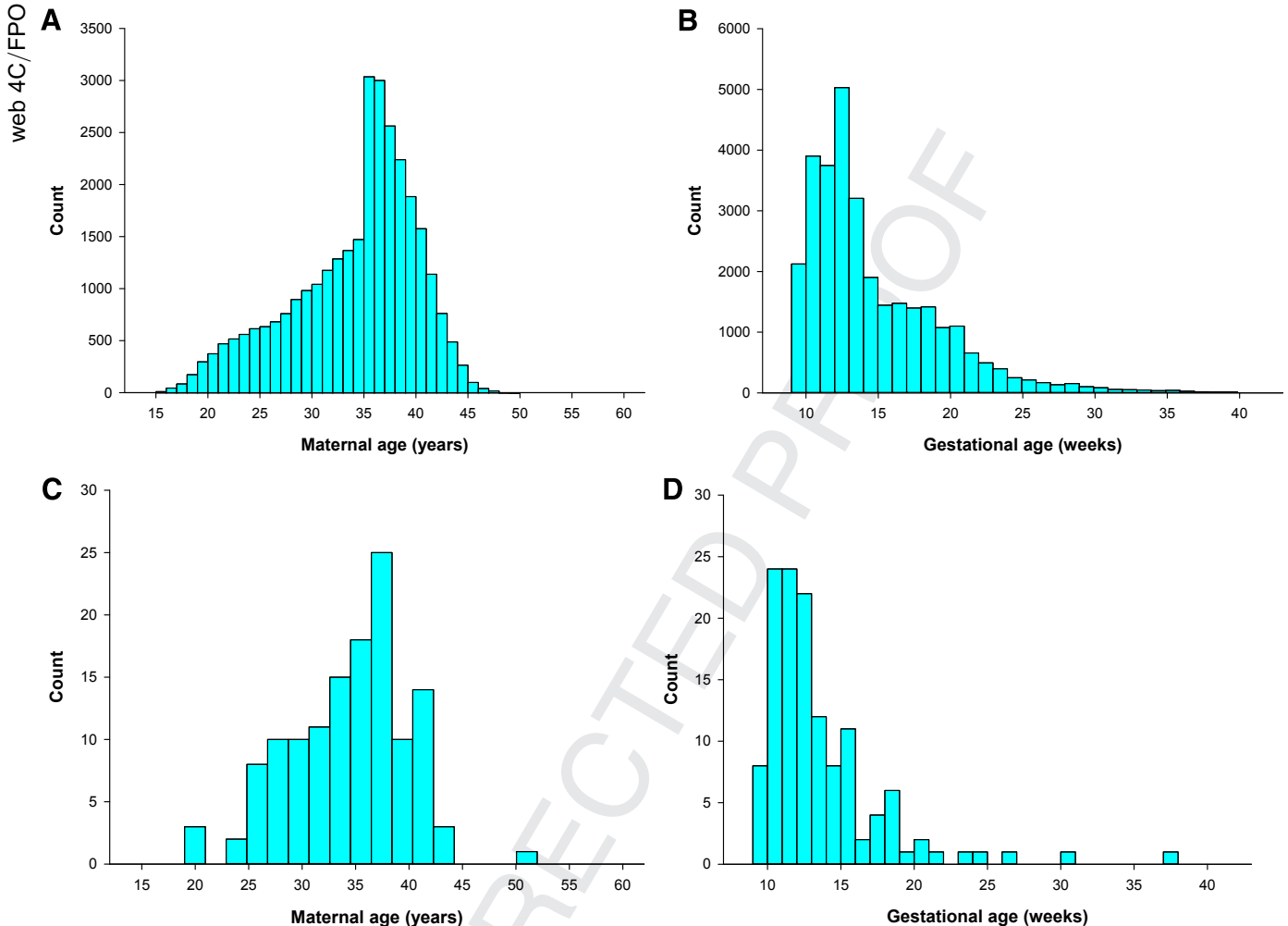
## RESULTS

### Study participants and samples

In the present cohort of 30,795 cases with an NIPT result, 130 (0.42%) received a report indicating the presence of additional fetal haplotypes. For the whole cohort, the mean maternal age was  $33.6 \pm 6.1$  (range, 13.0–63.0) years (Figure 2, A), and the mean gestational [F2] age was  $14.5 \pm 4.7$  (range, 9.0–40.9) weeks (Figure 2, B); maternal age was confirmed for the single case with a maternal age  $>52$  years. For the 130 cases where an additional fetal haplotype was identified by NATUS, the mean



**FIGURE 2**  
Maternal age and gestational age histograms



**A**, Maternal and **B**, gestational age histograms for whole cohort. **C**, Maternal and **D**, gestational age histograms for cases with identified additional fetal haplotypes. Although not apparent because of scale of Y-axis, within whole cohort there were 8 cases with maternal ages of 49-63 years; maternal age was confirmed for single case with maternal age of >52 years.

Curnow. SNP-based NIPT detects vanishing twin pregnancies. *Am J Obstet Gynecol* 2014.

maternal age was  $34.3 \pm 5.7$  (range, 19.0–52.0) years (Figure 2, C), and the mean gestational age was  $13.3 \pm 4.1$  (range, 9.0–38.0) weeks (Figure 2, D). While the majority of NIPT samples were from women at early gestational ages, samples were received up to 40 weeks' gestation (Figure 3); 2% (658/30,795) of samples were from women in their third trimester.

### Clinical outcomes

Karyotype or ultrasound confirmation (karyotype for singleton pregnancies, ultrasound for multifetal pregnancies)

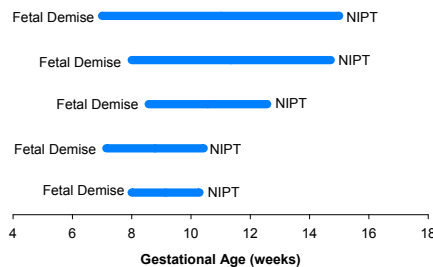
was available for 76 (58.5%) of the 130 cases identified with additional parental haplotypes. This included 32 (42.1%) vanishing twin, 37 (48.7%) viable twin, 4 (5.3%) triploid pregnancies, and 3 (3.9%) nontriploid pregnancies that lacked evidence of co-twin demise (Table 1). For the 3 nontriploid pregnancies, 2 had euploid karyotypes, and 1 was shown to be a trisomy 18 fetus (Appendix; Supplementary Table).

### Multifetal pregnancies

Vanishing twin cases had a significantly higher median maternal age than twin

cases, 37.5 and 33.0 years, respectively ( $P < .001$ ). The median gestational age was slightly lower in vanishing twin cases than in twin cases, 12.1 and 13.0 weeks, respectively ( $P = .018$ ). There was no significant difference ( $P = .686$ ) between the average fetal fraction of vanished twin ( $11.0 \pm 3.8\%$ ) and twin ( $11.4 \pm 4.3\%$ ) pregnancies. Of the 32 vanishing twin cases, 25 (78.1%) were in the first trimester and 7 (21.9%) were in the second trimester at the time of NIPT sampling. Five cases reported an estimated date of fetal demise: demise occurred in the first trimester in all 5

**FIGURE 3**  
Graphical representation of time elapsed between estimated fetal demise and detection by NIPT for 5 confirmed vanishing twin cases



Each line indicates individual confirmed vanishing twin case with known estimated date of fetal demise. Longest period between fetal demise and NIPT was 8 weeks.

NIPT, noninvasive prenatal testing.

Curnow. SNP-based NIPT detects vanishing twin pregnancies. *Am J Obstet Gynecol* 2014.

cases (Figure 3). The time between demise and NIPT sampling ranged from 2–8 weeks (Table 2).

### Triploid pregnancies

All triploidy cases in this cohort were determined to be diandric (Table 3), indicating that in each case the additional fetal haplotype was paternal in origin. Fetal sex was determined for all triploidy cases by analysis of fetal sex chromosome copy numbers; the fetal karyotype matched the fetal sex determined by NIPT for all 3 triploidy cases where karyotype specifics were communicated during follow-up (Table 3). For triploidy cases 1, 2, and 4 detailed in Table 3, the pregnancies spontaneously aborted and karyotype confirmation was obtained from the POC; during clinical follow-up, 2 of these cases were reported as partial mole pregnancies. For triploidy cases 3 and 5 (Table 3), clinical evaluation identified large placentas and oligohydramnios in both cases.

### COMMENT

This SNP-based NIPT approach identified previously undetected twin and triploid pregnancies in women undergoing routine prenatal screening. This method was previously validated for

detecting fetal trisomy 21, trisomy 18, trisomy 13, monosomy X, and sex chromosome trisomies in singleton pregnancies, as well as additional fetal haplotypes indicating twin or triploid pregnancies.<sup>9–12</sup> This is the first report detailing the clinical outcomes following NIPT identification of additional fetal haplotypes in a large general screening population.

Because this SNP-based method analyzes polymorphic loci, incorporates genotypic information, and does not require a reference chromosome, it is uniquely able to detect the presence of additional fetal haplotypes associated with dizygotic twins and triploidy. However, this method is currently unable to distinguish between these possibilities. Ultrasound examination should readily distinguish between an ongoing twin and a singleton pregnancy, and may reveal the presence of a vanished twin. A confirmed ongoing twin pregnancy may warrant close monitoring of the pregnancy, as twin pregnancies involve a unique set of complications<sup>16,17</sup>; the additional haplotype merely suggests dizygotic twins. In the case of a confirmed singleton pregnancy with NIPT-identified additional haplotypes, options include repeat NIPT, taking a wait-and-see approach, or follow-up diagnostic testing to rule out triploidy; invasive testing should be carefully considered in light of other indications given the inherent risks to mother and baby.<sup>18</sup> Where ultrasound indicates a singleton pregnancy and where triploidy indications are lacking, or where invasive testing ruled out triploidy, the possibility of early and undetected co-twin demise cannot be ruled out. Most vanishings occur in the first trimester,<sup>19</sup> so clinical detection is largely dependent on whether a patient receives an early ultrasound and the time of fetal demise. Thus, for patients electing NIPT, an ultrasound may provide helpful information to assess fetal number and detect the presence of a vanishing twin or fetal triploidy.

The ability to detect vanished twins is clinically important. Specifically, the increased rate of abnormalities in vanished twins is likely to generate

**TABLE 1**  
Follow-up information on twins/triploidy calls

All cases (n = 130 <sup>a</sup> )	Value
Multifetal pregnancies	
Ongoing twin <sup>b</sup>	37
Vanishing twin <sup>b</sup>	32
Singleton pregnancies	
Confirmed triploid <sup>c</sup>	4
Unconfirmed triploid	1 <sup>d</sup>
Confirmed nontriploid	3 <sup>e</sup>
Unknown fetal no.	
Pregnancy loss <sup>f</sup>	3
No follow-up <sup>g</sup>	50

<sup>a</sup> Total no. of cases with "additional fetal haplotypes" (twins/triploidy) result at  $\geq 9$  wk of gestation; <sup>b</sup> Confirmed by ultrasound detection of multifetal pregnancy; <sup>c</sup> Confirmed by karyotype; <sup>d</sup> Patient had ultrasound findings that were consistent with triploid fetus, amniocentesis was not possible because of oligohydramnios; <sup>e</sup> Invasive testing revealed single euploid fetus in 2 pregnancies and single trisomy 18 fetus in 1 pregnancy; <sup>f</sup> Patient experienced spontaneous abortion and did not obtain karyotype confirmation, ultrasound was suggestive of singleton pregnancy; <sup>g</sup> Follow-up information was not available.

Curnow. SNP-based NIPT detects vanishing twin pregnancies. *Am J Obstet Gynecol* 2014.

false-positive results when using methods that can only assess total DNA and are unable to detect additional haplotypes. Indeed, 2 recent studies using counting-based methods attributed a significant proportion of false positives to vanishing twins: in 1 study 15% of NIPT false-positive results were shown to involve vanished twins,<sup>14</sup> and in a second study 33% (1/3) of trisomy 21 false positives were attributed to vanishing twins.<sup>20</sup> Additionally, a vanished twin with discordant fetal sex may lead to the incorrect NIPT-based identification of fetal sex when compared to ultrasound (eg, a female fetus where there is a male vanished twin may be identified as male via NIPT). Both circumstances lead to parental anxiety and may escalate to unnecessary invasive testing, which carries with it a small but real risk of harm to mother and fetus.<sup>18</sup>

Similarly, identification of triploid pregnancies is beneficial because of the substantial clinical implications for

TABLE 2

## Case details for confirmed vanishing twin cases

Case	GA at demise, wk	GA at NIPT, wk	Time from demise to NIPT, wk	Fetal fraction
1	8.0	10.3	2.3	11.7%
2	7.1	10.4	3.3	4.6%
3	8.6	12.6	4.0	12.8%
4	8.0	14.7	6.7	11.8%
5	7.0	15.0	8.0	8.1%

GA at estimated date of co-twin demise and at time of sample collection for NIPT, elapsed time between estimated demise and NIPT sampling, and fetal fraction for confirmed vanishing twin cases where clinical follow-up provided estimated date of fetal demise.

GA, gestational age; NIPT, noninvasive prenatal testing.

Curnow. SNP-based NIPT detects vanishing twin pregnancies. *Am J Obstet Gynecol* 2014.

patients. Triploidy results in severe fetal abnormalities and elevated risks for spontaneous abortion, preeclampsia, excessive postdelivery bleeding, and gestational trophoblastic neoplasia.<sup>21,22</sup> As such, timely detection of triploid cases may alter clinical management. The incorporation of parental genotypic information allowed for determination of parental origin; all cases in this study were diandric triploidy. Clinically, these cases would likely present as partial molar pregnancies, which would be at risk for gestational trophoblastic neoplasia and choriocarcinoma, a malignant trophoblastic cancer.<sup>23-25</sup> Digynic triploidies should also be detectable with this SNP-based method.

However, these pregnancies present with very small, nonmolar placentas,<sup>26</sup> which is correlated with decreased fetal cfDNA fractions and complicates detection using NIPT.<sup>10</sup> However, previous studies showed that an “extremely low fetal fraction” per se increased the risk of fetal chromosomal aneuploidy, including digynic triploidy.<sup>10,12</sup>

The prevalence of twin pregnancies is approximately 1 in 30 births,<sup>27,28</sup> with vanishing twins occurring in approximately 30% of early diagnosed twin pregnancies.<sup>29-33</sup> This is substantially higher than for triploid pregnancies, which occur in approximately 1 in 2000 pregnancies at 12 weeks of gestation, when many women undergo NIPT.<sup>34,35</sup>

Thus, the substantially greater possibility of a vanishing twin pregnancy (or unrecognized multiple gestation) should not be overlooked upon a screen-positive result.

The increased incidence of twinning in developed countries, a reflection of the progressive rise in the average maternal age at the time of conception<sup>36,37</sup> and increasing utilization of assisted reproductive technology (ART),<sup>27</sup> has important clinical implications for prenatal screening. Specifically, twinning rates are higher in women using ART, so the proportion of vanishing twin pregnancies is also likely higher. Indeed, 9% of conceptions using intracytoplasmic sperm injection resulted in vanishing twin pregnancies.<sup>38</sup> However, it is unclear how many women in this cohort used ART; the number of cases found to involve a vanishing twin was 0.18% (additional fetal haplotypes were identified in 0.42% of the 30,795 cases, and of those cases with clinical follow-up, 42.7% were vanishing twin pregnancies, for 0.42% × 42.7%). It may be reasonable to assume that the rate of aneuploidy among vanished twins is similar to that found in analysis of POC samples, which was reported to be about 60%.<sup>39,40</sup> This implies that approximately 0.11% of NIPT cases involve a chromosomally abnormal vanishing twin. As this is the same order of magnitude as NIPT false-positive rates, it is not surprising that vanishing twins have been found to be responsible for a significant proportion of false positives in some studies<sup>14,20</sup> using NIPT methods that cannot detect vanished twins. Determining a more precise correlation between vanishing twins and aneuploidy as well as fetal fraction is an important area for ongoing research, but is beyond the scope of this present study.

In this cohort, the average maternal age was significantly higher in confirmed vanishing twin than in confirmed ongoing twin pregnancies, which is consistent with the increased risk for fetal aneuploidies associated with increasing maternal age. This suggests that increased rates of fetal aneuploidy may underlie the losses in the vanishing twin cohort. Vanishing twin and

TABLE 3

## Case details for triploidy cases

Case	NIPT findings			Clinical outcomes	
	Fetal fraction	Parent of origin <sup>a</sup>	Predicted sex	Result	Karyotype
1	5.1%	Diandric	XXX	Triploidy	69,XXX
2	11.4%	Diandric	XXY	Triploidy	69,XXY
3	22.6%	Diandric	XXY	Triploidy	N/A <sup>b</sup>
4	12.2%	Diandric	XXY	Triploidy	69,XXY
5	6.4%	Diandric	XXX	Unconfirmed triploidy <sup>c</sup>	

<sup>a</sup> Parent of origin of extra fetal haplotype, as determined by NIPT; <sup>b</sup> Detailed karyotype findings were not communicated during clinical follow-up; <sup>c</sup> Amniocentesis was not possible because of oligohydramnios, but ultrasound findings were consistent with triploid fetus.

NIPT, noninvasive prenatal testing.

Curnow. SNP-based NIPT detects vanishing twin pregnancies. *Am J Obstet Gynecol* 2014.



ongoing twin pregnancies could not be distinguished by fetal fractions. Of note, algorithm estimates of fetal fraction are based on a methodology validated in singleton pregnancies, and have not been independently validated in twin pregnancies. Ongoing clinical studies are focused on validating aneuploidy risk determination in multifetal pregnancies using this SNP-based technology.

It is unclear how long after demise the placenta from a vanished twin may contribute fetal cfDNA to maternal circulation. This is likely governed by the rate of placental tissue autolysis and the gestational age of the fetus at the time of demise. Studies in singleton pregnancies have shown that fetal cfDNA levels were 5-fold higher in women at the time of clinical recognition of spontaneous abortion than in women of the same gestational age with an ongoing pregnancy,<sup>41</sup> and remained elevated for at least 7 days after spontaneous abortion diagnosis.<sup>42</sup> Further, this effect was more pronounced in chromosomally abnormal spontaneous abortions than in spontaneous abortions with a normal karyotype.<sup>42</sup> As such, it is quite possible that in a multifetal pregnancy there may be a similarly increased cfDNA contribution from a vanished twin immediately following the loss, thus compromising cfDNA screening results for the viable twin. In the results reported here, fetal cfDNA from a vanished twin was detectable for up to 8 weeks following co-twin demise. Thus, there is the potential for vanished twins to influence NIPT results long after co-twin demise.

A limitation of this study was incomplete follow-up, reflecting the reality that many patients do not receive a first-trimester ultrasound or may transfer care. Nevertheless, where data were reported, the presence of additional fetal haplotypes determined by NIPT was confirmed in the vast majority of cases by ultrasound detection of a multifetal pregnancy or karyotype confirmation of fetal triploidy.

This SNP-based NIPT identified vanishing twin, unrecognized ongoing twin, and triploid pregnancies. Identification of partial (triploidy) and complete molar

pregnancies is important because of the substantial clinical implications for patients, including the risk for gestational trophoblastic neoplasia and choriocarcinoma. As vestigial placental tissue from a lost twin can contribute fetal cfDNA to maternal circulation for weeks post-demise, identification of vanishing twin pregnancies is critical to avoid incorrect NIPT results and subsequent unnecessary invasive procedures when non-SNP-based NIPT methods are used.

### Conclusion

The principal finding of this study was that SNP-based NIPT can uniquely detect triploidy and unrecognized multifetal pregnancies, including vanishing twins, within a general screening population. Clinical outcomes revealed that the majority of these cases were unrecognized multifetal pregnancies, ongoing or vanishing twins, with a small number of triploid pregnancies also detected. The ability to detect vanishing twin pregnancies is clinically important as it will reduce the number of false-positive results and thereby reduce unnecessary invasive diagnostic procedures. Future longitudinal studies, designed to evaluate the typical time period for which residual fetal cfDNA from vanishing twins remains detectable, may provide greater insight into appropriate clinical care in these patients. ■

### REFERENCES

1. Bianchi DW, Platt LD, Goldberg JD, Abuhamad AZ, Sehnert AJ, Rava RP. Genome-wide fetal aneuploidy detection by maternal plasma DNA sequencing. *Obstet Gynecol* 2012;119:890-901.
2. Palomaki GE, Deciu C, Kloza EM, et al. DNA sequencing of maternal plasma reliably identifies trisomy 18 and trisomy 13 as well as Down syndrome: an international collaborative study. *Genet Med* 2012;14:296-305.
3. Palomaki GE, Kloza EM, Lambert-Messerlian GM, et al. DNA sequencing of maternal plasma to detect Down syndrome: an international clinical validation study. *Genet Med* 2011;13:913-20.
4. Ashoor G, Syngelaki A, Wagner M, Birdir C, Nicolaides KH. Chromosome-selective sequencing of maternal plasma cell-free DNA for first-trimester detection of trisomy 21 and trisomy 18. *Am J Obstet Gynecol* 2012;206:322.e1-5.

5. Ashoor G, Syngelaki A, Wang E, et al. Trisomy 13 detection in the first trimester of pregnancy using a chromosome-selective cell-free DNA analysis method. *Ultrasound Obstet Gynecol* 2013;41:21-5.
6. Norton ME, Brar H, Weiss J, et al. Non-invasive chromosomal evaluation (NICE) study: results of a multicenter prospective cohort study for detection of fetal trisomy 21 and trisomy 18. *Am J Obstet Gynecol* 2012;207:137.e1-8.
7. Sparks AB, Struble CA, Wang ET, Song K, Oliphant A. Noninvasive prenatal detection and selective analysis of cell-free DNA obtained from maternal blood: evaluation for trisomy 21 and trisomy 18. *Am J Obstet Gynecol* 2012;206:319.e1-9.
8. Sparks AB, Wang ET, Struble CA, et al. Selective analysis of cell-free DNA in maternal blood for evaluation of fetal trisomy. *Prenat Diagn* 2012;32:3-9.
9. Nicolaides KH, Syngelaki A, Gil M, Atanasova V, Markova D. Validation of targeted sequencing of single-nucleotide polymorphisms for non-invasive prenatal detection of aneuploidy of chromosomes 13, 18, 21, X, and Y. *Prenat Diagn* 2013;33:575-9.
10. Nicolaides KH, Syngelaki A, Gil MD, Quezada MS, Zinevich Y. Prenatal detection of fetal triploidy from cell-free DNA testing in maternal blood. *Fetal Diagn Ther* 2014;35:212-7.
11. Samango-Sprouse C, Banjevic M, Ryan A, et al. SNP-based non-invasive prenatal testing detects sex chromosome aneuploidies with high accuracy. *Prenat Diagn* 2013;33:643-9.
12. Pergament E, Cuckle H, Zimmermann B, et al. Single-nucleotide polymorphism-based noninvasive prenatal testing in a high-risk and low-risk cohort. *Obstet Gynecol* 2014;124:210-8.
13. Zimmermann B, Hill M, Gemelos G, et al. Noninvasive prenatal aneuploidy testing of chromosomes 13, 18, 21, X, and Y, using targeted sequencing of polymorphic loci. *Prenat Diagn* 2012;32:1233-41.
14. Futch T, Spinosa J, Bhatt S, de Feo E, Rava RP, Sehnert AJ. Initial clinical laboratory experience in noninvasive prenatal testing for fetal aneuploidy from maternal plasma DNA samples. *Prenat Diagn* 2013;33:569-74.
15. Dar P, Curnow KJ, Zimmermann B, et al. Clinical experience and follow-up with large scale single-nucleotide polymorphism-based noninvasive prenatal aneuploidy testing. *Am J Obstet Gynecol* 2014.
16. Spellacy WN, Handler A, Ferre CD. A case-control study of 1253 twin pregnancies from a 1982-1987 perinatal data base. *Obstet Gynecol* 1990;75:168-71.
17. Ananth CV, Chauhan SP. Epidemiology of twinning in developed countries. *Semin Perinatol* 2012;36:156-61.
18. American College of Obstetricians and Gynecologists. Invasive prenatal testing for aneuploidy. ACOG Practice bulletin no. 88. *Obstet Gynecol* 2007;110:1459-67.

- 783  
784  
785  
786  
787  
788  
789  
790  
791  
792  
793  
794  
795  
796  
797  
798  
799  
800  
801  
802  
803  
804  
805  
806  
807  
808  
809  
810  
811  
812  
813  
814  
815  
816  
817  
818  
819  
820  
821  
822  
823  
824  
825  
826  
827  
828  
829  
830  
831  
832  
833  
834  
835  
836  
837  
838
19. Manzur A, Goldsman MP, Stone SC, Frederick JL, Balmaceda JP, Asch RH. Outcome of triplet pregnancies after assisted reproductive techniques: how frequent are the vanishing embryos? *Fertil Steril* 1995;63:252-7.
20. Porreco RP, Garite TJ, Maurel K, et al. Noninvasive prenatal screening for fetal trisomies 21, 18, 13 and the common sex chromosome aneuploidies from maternal blood using massively parallel genomic sequencing of DNA. *Am J Obstet Gynecol* 2014;211:365.e1-12.
21. Rijhsinghani A, Yankowitz J, Strauss RA, Kuller JA, Patil S, Williamson RA. Risk of pre-eclampsia in second-trimester triploid pregnancies. *Obstet Gynecol* 1997;90:884-8.
22. Seckl MJ, Sebire NJ, Berkowitz RS. Gestational trophoblastic disease. *Lancet* 2010;376:717-29.
23. Joergensen MW, Niemann I, Rasmussen AA, et al. Triploid pregnancies, genetic and clinical features of 158 cases. *Am J Obstet Gynecol* 2014;211:370.e1-19.
24. Zaragoza MV, Surti U, Redline RW, Millie E, Chakravarti A, Hassold TJ. Parental origin and phenotype of triploidy in spontaneous abortions: predominance of diandry and association with the partial hydatidiform mole. *Am J Hum Genet* 2000;66:1807-20.
25. Lurain JR. Gestational trophoblastic disease I: epidemiology, pathology, clinical presentation and diagnosis of gestational trophoblastic disease, and management of hydatidiform mole. *Am J Obstet Gynecol* 2010;203:531-9.
26. Sergi C, Schiesser M, Adam S, Otto HF. Analysis of the spectrum of malformations in human fetuses of the second and third trimester of pregnancy with human triploidy. *Pathologica* 2000;92:257-63.
27. Centers for Disease Control and Prevention ASfRM, Technology SfAR. 2010 Assisted reproductive technology national summary report. Atlanta, GA: US Department of Health and Human Services, Centers for Disease Control and Prevention; 2012.
28. Martin JA, Hamilton BE, Osterman MLK. Three decades of twin births in the United States, 1980–2009. Hyattsville, MD: National Center for Health Statistics, Centers for Disease Control and Prevention; 2012.
29. Sampson A, de Crespigny LC. Vanishing twins: the frequency of spontaneous fetal reduction of a twin pregnancy. *Ultrasound Obstet Gynecol* 1992;2:107-9.
30. Landy HJ, Weiner S, Corson SL, Batzer FR, Bolognese RJ. The "vanishing twin": ultrasonographic assessment of fetal disappearance in the first trimester. *Am J Obstet Gynecol* 1986;155:14-9.
31. Landy HJ, Keith LG. The vanishing twin: a review. *Hum Reprod Update* 1998;4:177-83.
32. Kelly MP, Molo MW, Maclin VM, Binor Z, Rawlins RG, Radwanska E. Human chorionic gonadotropin rise in normal and vanishing twin pregnancies. *Fertil Steril* 1991;56:221-4.
33. Dickey RP, Taylor SN, Lu PY, et al. Spontaneous reduction of multiple pregnancy: incidence and effect on outcome. *Am J Obstet Gynecol* 2002;186:77-83.
34. Snijders RJ, Sebire NJ, Nicolaides KH. Maternal age and gestational age-specific risk for chromosomal defects. *Fetal Diagn Ther* 1995;10:356-67.
35. Jacobs PA, Angell RR, Buchanan IM, Hassold TJ, Matsuyama AM, Manuel B. The origin of human triploids. *Ann Hum Genet* 1978;42:49-57.
36. Mathews TJ, Hamilton BE. Mean age of mother, 1970–2000, Vol 51. Hyattsville, MD: National Center for Health Statistics, Centers for Disease Control and Prevention; 2002.
37. Mathews TJ, Hamilton BE. Delayed child-bearing: more women are having their first child later in life. Hyattsville, MD: National Center for Health Statistics, Centers for Disease Control and Prevention; 2009.
38. Mansour R, Serour G, Aboulghar M, Kamal O, Al-Inany H. The impact of vanishing fetuses on the outcome of ICSI pregnancies. *Fertil Steril* 2010;94:2430-2.
39. Lathi RB, Gustin SL, Keller J, et al. Reliability of 46,XX results on miscarriage specimens: a review of 1,222 first-trimester miscarriage specimens. *Fertil Steril* 2013;101:178-82.
40. Levy B, Sigurjonsson S, Pettersen B, et al. Genomic imbalance in products of conception: single nucleotide polymorphism chromosomal microarray analysis. *Obstet Gynecol* 2014;124:202-9.
41. Yin A, Ng EH, Zhang X, He Y, Wu J, Leung KY. Correlation of maternal plasma total cell-free DNA and fetal DNA levels with short term outcome of first-trimester vaginal bleeding. *Hum Reprod* 2007;22:1736-43.
42. Lim JH, Kim MH, Han YJ, et al. Cell-free fetal DNA and cell-free total DNA levels in spontaneous abortion with fetal chromosomal aneuploidy. *PLoS One* 2013;8:e56787.
- 839  
840  
841  
842  
843  
844  
845  
846  
847  
848  
849  
850  
851  
852  
853  
854  
855  
856  
857  
858  
859  
860  
861  
862  
863  
864  
865  
866  
867  
868  
869  
870  
871  
872  
873  
874  
875  
876  
877  
878  
879  
880  
881  
882  
883  
884  
885  
886  
887  
888  
889  
890  
891  
892  
893  
894



## APPENDIX

## SUPPLEMENTARY TABLE

## Confirmation methods for patients with diagnostic tests

Case	Outcome	Method
1	Triploidy	CVS
2, 3, 4	Triploidy	POC
5	Euploid	Amniocentesis
6	Euploid	CVS
7	Trisomy 18	CVS

CVS, chorionic villus sampling; POC, products of conception testing.

Curnow. SNP-based NIPT detects vanishing twin pregnancies. *Am J Obstet Gynecol* 2014.

UNCORRECTED PROOF